



AI-POWERED GLOBAL HEALTHCARE



# inTrigue

Accurate insight into rare diseases and targeted medicines enhanced by AI

## Volv inTrigue: Be ready for personalised medicine

With inTrigue we deliver content to support diagnosis through the discovery of new predictive digital biomarkers.

We use high sensitivity proprietary technologies to detect digital biomarkers across all human diseases focussing in areas of significant unmet need or of difficult to diagnose conditions. We transform disease management and treatment for the first time at the level of the individual, and especially where the cohorts cannot be easily determined.

inTrigue reshapes medical practice, helping specialists make better clinical diagnoses for

precision and personalised medicine, so that they can correctly treat the precise cohort of patients that will benefit from your medicines.

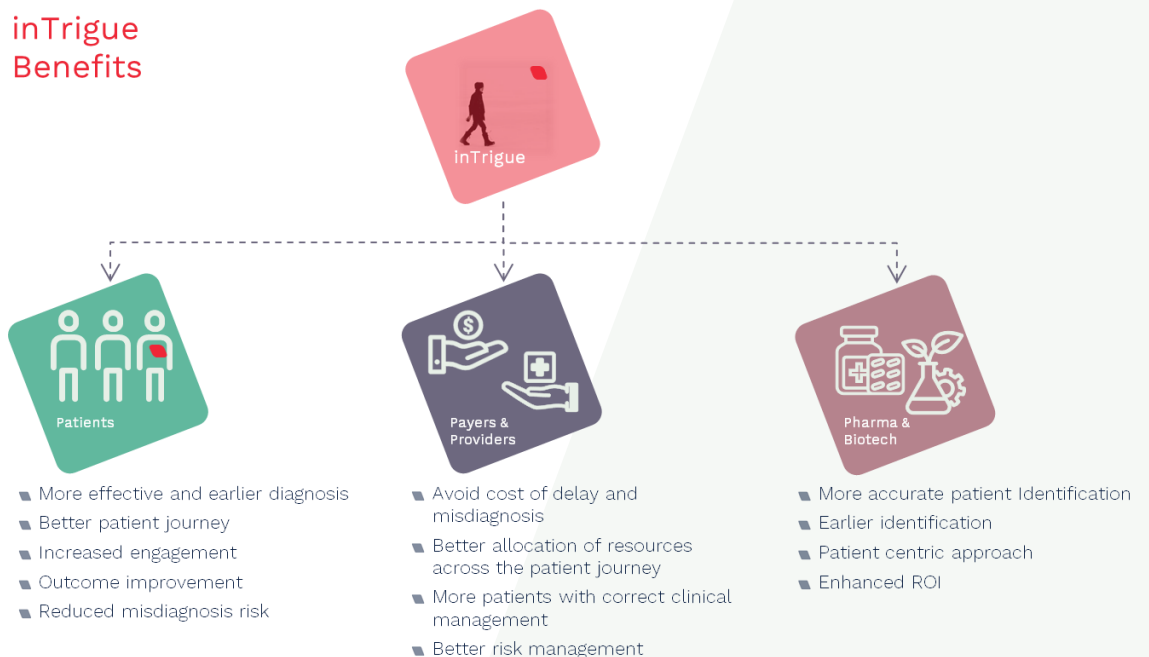
Our expertise provides insight for our customers to apply healthcare solutions in a more time efficient and cost-effective way, impacting patients through significantly earlier diagnosis and more accurate targeting.

inTrigue is a capability that supports clinical specialists and that you can use today, to deliver valuable benefits to your customers and to grow your business significantly.

Rare diseases and personalised medicines require that you understand your market. InTrigue helps by:

- Enhancing the understanding of the target disease
- Optimising your patient targeting
- Accurately finding cases and identifying cohorts for trials
- Proving the evidence for a specific population
- Providing clarity on market access planning
- Building in real Risk Management /REMS

## inTrigue Benefits





### What does it do?

inTrigue does five things for you better than any other current approach:

- Dynamic Disease Insight
- Patient Cohort Finding
- Prevalence Insight
- Risk Mitigation
- Improves Revenue

### With Unrivalled Accuracy

inTrigue's current performance has an AUC of 97.5%. What does that mean? It means there are almost no false positives. It is available for your company today.

### Dynamic Disease Insight

inTrigue first uses a new way to learn about your disease driving brand new insights for you in the following areas:

- Symptom prioritisation
- Patient journey
- Misdiagnosis
- Variance in clinical decision making

And it keeps learning and improving and can also learn from patient registries, your clinical trials data and other sources.

### Patient Cohort Finding

inTrigue finds patients. It finds patients you know exist but can't find. It also finds patients that you don't know exist yet. It identifies patient cohorts and enables precision case-finding.

Stop hoping you'll find the right patients for your trials: InTrigue excels at cohort identification. Start putting your real-world evidence to work and derive full value from your clinical trials: InTrigue identifies the patients that fit the cohort profile.

### Prevalence Insight

Stop guessing about prevalence: InTrigue brings evidence to your prevalence claim and brings confidence to payer discussions about your treatment population, it uncovers true prevalence.

### Risk Mitigation

Today's focus on value and costs of medicines means payers are looking to reduce their risks. To grow your treatment population, you need to

work with payers to demarcate these treatment populations to reduce that risk.

That way, the patients who will benefit from your medicine are the only ones who will get it. And, at the same time, you work with your customers to ensure they derive the maximum value from their investment and trust in your medicines.

Because inTrigue is so good at patient cohort identification, it ring-fences risk for REMS.

### Improves Revenue

inTrigue delivers world class precision that you can use to calibrate your market access planning more precisely; increase your impact and reduce your marketing costs with our market access strategies. Importantly, build confidence in knowing:

**True Prevalence** through using inTrigue to identify the patient cohort accurately and more completely, means you get to know your real market.

**Clinician Adoption** means that you can impact clinical practice by helping physicians identify and treat the right patients. Uptake with physicians shows that for companies focussing on Rare Diseases the Specialist Diagnosing Physicians become the real buyers owing to the accuracy of the clinical toolsets that they can work with. This can drive reduced cost of sales significantly.

**Patient Satisfaction** is increased as earlier diagnosis reduces patient frustration, increases quality of life and inTrigue helps focus on their needs more precisely.

### Grows your market

- More accurate and greater numbers of patients
- Reduce your cost of sales
- Trust and utility in the system by diagnosing specialists
- Accuracy reduces your risk
- Accurate prevalence and market size allow important and compelling pricing conversations.

### Contact:

[enquiries@volv.global](mailto:enquiries@volv.global)

[www.volv.global](http://www.volv.global)

Digital Health Hub, Building SE-A,  
Route de la Corniche 3, 1066 Epalinges